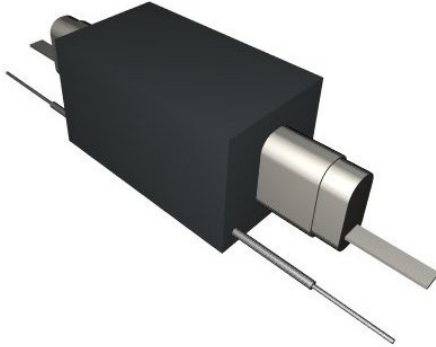


New

137D Form A High Insulation/ High Voltage



PRODUCT DESCRIPTIONS

The 137D series is a high insulation resistance relay with high voltage capability. The Switching Voltage is rated 3.5KV, breakdown voltage rated 5KV. Although insulation resistance is up to $10^{12} \Omega$, standard shield as guard structure achieves very low leakage at application level.

- Insulation Resistance up to 10^{12}
- 1 Form A with 24.0V Coil
- Breakdown Voltage 5000V

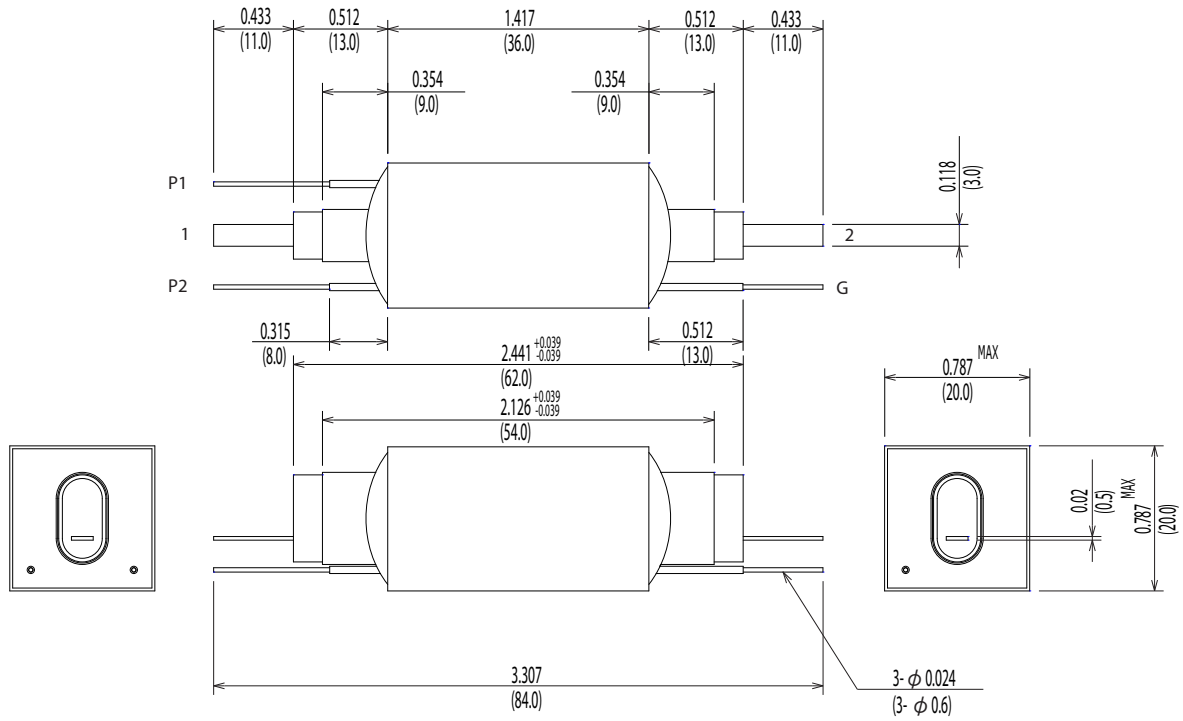
SPECIFICATIONS



137D Series		137D-1A31N2	
Parameters	Units	1 Form A	Test Conditions
Coil Specifications			
Nominal Coil Voltage	VDC	24.0	
Coil Resistance	Ω	700	$\pm 10\%$ @ 20°C
Operate Voltage	VDC Max	17.6	@20°C
Release Voltage	VDC Min	2.4	@20°C
Contact Ratings			
Switching Voltage	Volts	3500	Max DC/Peak AC resistance
Switching Current	Amps	3.0	Max DC/Peak AC resistance
Carry Current	Amps	4.0	Max DC/Peak AC resist (@30°C)
Contact Rating	Watts	50	Max DC/Peak AC resistance
Life Expectancy	$\times 10^6$ Cycle	100	@1V 10mA
Contact Resistance	m Ω	200	Max initial @ operate voltage
Relay Specifications			
Insulation Resistance	Ω Min	10^{12}	Between all isolated pins @ 1000V 20°C 65%RH
Dielectric Strength(Static)	VDC Min	5000	Between contacts
	VDC Min	5000	Contacts to shield
	VDC Min	5000	Contacts/Shield to coil
Operate Time (Including Bounce)	msec Max	4.0	@ nominal coil voltage 100 Hz square wave
Release Time	msec Max	3.0	Diode suppression
Measurement Reference Conditions		Environmental Ratings	
Temp: 15°C to 35°C Humidity: 25% to 75%RH Atmospheric Pressure: 860 to 1060hpa		Storage temp: -40°C to +80°C Operate temp: -20°C to +60°C Vibration: 20G's to 2000Hz Shock: 50G's	

Dimensions All Dimensions are inches (mm)

137D-1A31N2



Schematic <Top View>

