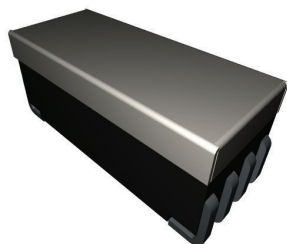


9E Series

Ultra Density Surface Mount



PRODUCT DESCRIPTIONS

Development philosophy with inherited reliability and assembly capacity of 1EH Series was put into succession of the 9E Series small form factor reed relay.

Compared with 1EH-14J, the mounting area for this series achieved 30% shrinkage with the same great reliability. The 9E Series has a long product life that is widely accepted by the ATE, telecommunications and wireless communications markets.



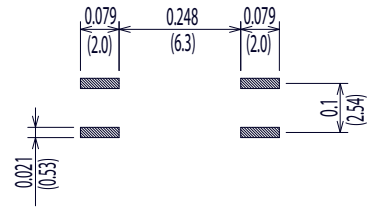
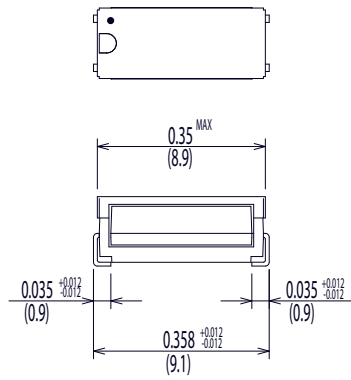
SPECIFICATIONS

9E Series		9E-50J	9E-10J	9E-54J	9E-14J	
Parameters	Units	1 Form A				Test Conditions
Coil Specifications						
Nominal Coil Voltage	VDC	3.3	5.0	3.3	5.0	±10% @ 20°C @ 20°C @ 20°C
Coil Resistance	Ω	100	200	100	200	
Operate Voltage	VDC Max	2.8	3.75	2.8	3.75	
Release Voltage	VDC Min	0.5	0.7	0.5	0.7	
Contact Ratings						
Switching Voltage	Volts	100				Max DC/Peak AC resistance
Switching Current	Amps	0.5				Max DC/Peak AC resistance
Carry Current	Amps	1.0				Max DC/Peak AC resistance
Contact Rating	Watts	10				Max DC/Peak AC resistance
Life Expectancy	x10 ⁶ Cycle	300				@ 1V 10mA
Contact Resistance	mΩ	150				Max initial @ operate voltage
Contact Resistance Stability	mΩ	5.0				Max initial @ operate voltage
Relay Specifications						
Insulation Resistance	Ω Min	10 ¹¹		10 ¹¹		Between all isolated pins @ 100V 20°C 65%RH
Dielectric Strength	VDC Min	150		150		Between contacts
	VDC Min	No shield		250		Contacts to shield
	VDC Min	250		250		Contacts/Shield to coil
Operate Time (Including Bounce)	msec Max	0.3		0.3		@ nominal coil voltage 100 Hz square wave
Release Time	msec Max	0.05		0.05		Diode suppression
Measurement Reference Conditions			Environmental Ratings			
Temp: 15°C to 35°C Humidity: 25% to 75%RH Atmospheric Pressure: 860 to 1060hpa			Storage temp: -40°C to +85°C Operate temp: -20°C to +80°C Vibration: 20G's to 2000Hz Shock: 50G's Processing temp: 260°C max for 60sec. dwell time			

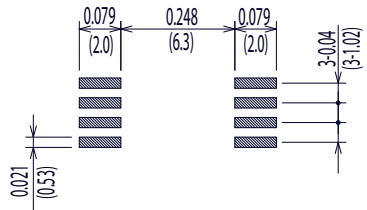
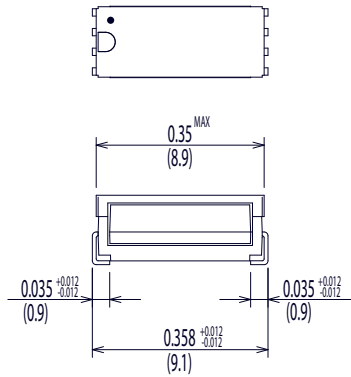
Dimensions All Dimensions are inches (mm)

Land Pattern Recommendation

9E-50J/9E-10J

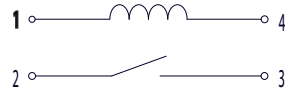


9E-54J/9E-14J



Schematic <Top View>

9E-50J/9E-10J



9E-54J/9E-14J

