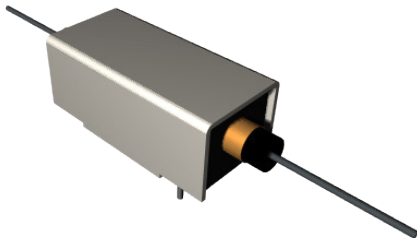


95D Series High Insulation Resistance



PRODUCT DESCRIPTIONS

With electrostatic and magnetic shields, the 95D series feature an easy-to use mount packaging as well as precise, and accurate control of minute signals.

- High Insulation Resistance up to 10^{14}
- Available 1 Form A, 2 Form A and 3 Form A
- Contact Rating Available in 10, 50 and 100 Watt Versions
- Lead Configuration in Lead and PCB

SPECIFICATIONS



95D 1A Series		95D-1A□4N4			
Parameters	Units	1 Form A			Test Conditions
Coil Specifications					
Nominal Coil Voltage	VDC	5.0	12.0	24.0	
Coil Resistance	Ω	450	2500	8000	±10% @ 20°C
Operate Voltage	VDC Max	3.75	8.8	17.6	@ 20°C
Release Voltage	VDC Min	0.7	1.2	2.4	@ 20°C
Contact Ratings					
Switching Voltage	Volts	350			Max DC/Peak AC resistance
Switching Current	Amps	0.5			Max DC/Peak AC resistance
Carry Current	Amps	2.8			Max DC/Peak AC resistance (@30°C)
Contact Rating	Watts	50			Max DC/Peak AC resistance
Life Expectancy	x10 ⁶ Cycle	1000			@ 1V 10mA
Contact Resistance	mΩ	150			Max initial @ operate voltage
Contact Resistance Stability	mΩ	5.0			Max initial @ operate voltage
Relay Specifications					
Insulation Resistance	Ω Min	10^{14}			Between open contacts
	Ω Min	10^{13}			Contacts to shield
	Ω Min	10^{11}			Shield to coil
Dielectric Strength	VDC Min	500			@ 100V 20°C 65%RH
	VDC Min	1000			Between contacts
	VDC Min	1000			Contacts to shield
Operate Time (Including Bounce)	msec Max	1.0			Contacts/Shield to coil
Release Time	msec Max	1.0			@ nominal coil voltage 100 Hz square wave Diode suppression
Measurement Reference Conditions			Environmental Ratings		
Temp: 15°C to 35°C Humidity: 25% to 75%RH Atmospheric Pressure: 860 to 1060hpa			Storage temp: -40°C to +85°C Operate temp: -20°C to +80°C Vibration: 20G's to 2000Hz Shock: 50G's		

Ordering Code:

95D-1A□4N4, 95D-2A□4N4, 95D-3A□4N4

□1)=1 (5.0VDC), 2(12.0VDC), 3(24.0VDC)

95D 2A Series		95D-2A□4N4			
Parameters	Units	2 Form A			Test Conditions
Coil Specifications					
Nominal Coil Voltage	VDC	5.0	12.0	24.0	±10% @ 20°C @ 20°C @ 20°C
Coil Resistance	Ω	260	1500	6000	
Operate Voltage	VDC Max	3.75	8.8	17.6	
Release Voltage	VDC Min	0.7	1.2	2.4	
Contact Ratings					
Switching Voltage	Volts	350			Max DC/Peak AC resistance
Switching Current	Amps	0.5			Max DC/Peak AC resistance
Carry Current	Amps	2.8			Max DC/Peak AC resistance (@30°C)
Contact Rating	Watts	50			Max DC/Peak AC resistance
Life Expectancy	x10 ⁶ Cycle	1000			@ 1V 10mA
Contact Resistance	mΩ	150			Max initial @ operate voltage
Contact Resistance Stability	mΩ	5.0			Max initial @ operate voltage
Relay Specifications					
Insulation Resistance	Ω Min	10 ¹⁴			Between open contacts
	Ω Min	10 ¹³			Contacts to shield
	Ω Min	10 ¹¹			Shield to coil
Dielectric Strength	VDC Min	500			@ 100V 20°C 65%RH
	VDC Min	1000			Between contacts
	VDC Min	1000			Contacts to shield
Operate Time (Including Bounce)	msec Max	1.0			Contacts/Shield to coil
Release Time	msec Max	1.0			@ nominal coil voltage 100 Hz square wave Diode suppression
Measurement Reference Conditions			Environmental Ratings		
Temp: 15°C to 35°C Humidity: 25% to 75%RH Atmospheric Pressure: 860 to 1060hpa			Storage temp: -40°C to +85°C Operate temp: -20°C to +80°C Vibration: 20G's to 2000Hz Shock: 50G's		

95D 3A Series		95D-3A□4N4			
Parameters	Units	3 Form A			Test Conditions
Coil Specifications					
Nominal Coil Voltage	VDC	5.0	12.0	24.0	±10% @ 20°C @ 20°C @ 20°C
Coil Resistance	Ω	180	1000	4000	
Operate Voltage	VDC Max	3.75	8.8	17.6	
Release Voltage	VDC Min	0.7	1.2	2.4	
Contact Ratings					
Switching Voltage	Volts	350			Max DC/Peak AC resistance
Switching Current	Amps	0.5			Max DC/Peak AC resistance
Carry Current	Amps	2.8			Max DC/Peak AC resistance (@30°C)
Contact Rating	Watts	50			Max DC/Peak AC resistance
Life Expectancy	x10 ⁶ Cycle	1000			@ 1V 10mA
Contact Resistance	mΩ	150			Max initial @ operate voltage
Contact Resistance Stability	mΩ	5.0			Max initial @ operate voltage
Relay Specifications					
Insulation Resistance	Ω Min	10 ¹⁴			Between open contacts
	Ω Min	10 ¹³			Contacts to shield
	Ω Min	10 ¹¹			Shield to coil
Dielectric Strength	VDC Min	500			@ 100V 20°C 65%RH
	VDC Min	1000			Between contacts
	VDC Min	1000			Contacts to shield
Operate Time (Including Bounce)	msec Max	1.0			Contacts/Shield to coil
Release Time	msec Max	1.0			@ nominal coil voltage 100 Hz square wave Diode suppression
Measurement Reference Conditions			Environmental Ratings		
Temp: 15°C to 35°C Humidity: 25% to 75%RH Atmospheric Pressure: 860 to 1060hpa			Storage temp: -40°C to +85°C Operate temp: -20°C to +80°C Vibration: 20G's to 2000Hz Shock: 50G's		

